

D – SERIES MINI EXCAVATOR RANGE

E12D / E14D / E17D / E18D / E19D / E20D / E22D / E25D / E28D / E35D / E50D / E55D / E60D / E65D / E15X / E25X



Versatile and exceptionally productive.

Suiting applications from track, irrigation and drainage scheme construction and maintenance through to fencing, temporary building creation and crop support erection, New Holland mini crawler excavators have a operating weight range from 1.0 to 6.5 tonnes. By offering a line which covers the whole mini excavator category, the new D-series answers all your needs. With a choice of 16 models, there is one for every application across landscaping, amenity work, agriculture, horticulture, nurseries, vineyards, estate management and general contracting.

With a unique two-piece boom offering, the new D-series mini excavators are designed to work efficiently in every condition, outperforming the competition in terms of dump clearance and maximum reach. All models are feature a compact tail design allowing work in the tightest spaces – across the range nine models are zero tail swing types and the remaining seven are short radius versions.

Need more? Discover the first fully electric New Holland mini excavator: the E15X. This machine is as versatile as the diesel versions, but also offers you the big advantage of being able to work in buildings without any air pollution.

Small in size. Big on performance. Huge in versatility.

Compact dimensions enable New Holland mini excavators to access and work in confined spaces. Yet those dimensions are matched to high performance that will impress you. Designed for day-long working, each model has class-leading excavation performance with the versatility to power a wide range of attachments.

Models		E12D	E14D	E17D	E18D	E19D	E20D	E22D	E25D	E28D	E35D	E50D	E55D	E60D	E65D	E15X	E25X
Max. rated power	[kW/hp(CV)]	8.8/11.8		12/16.3		13.7/18.6	13.7/18.6	15.4/20.9	13.7/18.6	18.5/25.2	18.2/24.7	42.6/57.9		44.3/60.2		11.0/15.0	
Operating weight with Canopy/Cab ISO 6016	(kg)	1330*/-	1385*/-	1690/1800	1830/1940	1880/1990	2010/2120	2220/2320	2580/2710	3020/3150	-/3400	-/4950	-/5400	-/5970	-/6520	1420*/-	
Maximum width	(mm)	790 - 1050		990 - 1250		990 - 1300			1500	1550	1580	1900		1980		790 - 1050	
Overall height	(mm)	2300		2370			2395	2527	2530			2570		2550		2300	
Rear rotation radius	(mm)	525	565	650			715	950	750	770	790	950	1050	1000	1100	710	
Max. digging depth Std/Opt arm	(mm)	1860/1980	2045/2175	2020/2220	2280/2480	2280/2480	2560/2760	2560/2760	2700/2900	2650/2850	2870/3070	3330/3580	3490/3740	3850/4100	3950/4200	2045/2175	
Max. dumping height Std/Opt arm	(mm)	2130/2215	2290/2380	2340/2460	2580/2700	2580/2700	3370/3550	2650/2760	3330/3460	3100/3220	3110/3230	3920/4080	5030/5270	4090/4240	5280/5510	2290/2380	

COMING
SOON

- Not available * with roll-bar and FOPS 1 roof ISO 6016



Minimum size and maximum performance.

With only 790mm overall width, E12D and E14D can pass through a standard domestic door. Combined with a zero-tail swing for E12D and a short radius for E14D, these machines are designed to work anywhere.



Need to access a room with low ceiling or doorway? The foldable roll-bar is easy to use, while also enabling compact machine storage without wasting building space.



The undercarriage can easily be retracted and the blade extension folded reducing the overall machine width from 1050mm to 790mm. This enables narrow passages.



The operator station has been designed to be as comfortable and functional as possible. Platform access is facilitated by a foldable left armrest, providing easy access to the operator seat without compromising comfort or safety.



Fingertip precision

Precision is the master word with these small machines. Power-assisted controls provide the smoothness and comfort of higher-class diggers. On top of their agility and comfort, E12D and E14D excel in terms of versatility; with up to two proportional auxiliary hydraulic circuits controlled with two ergonomic rollers directly from the joysticks, these models can cope with a vast number of different attachments.

It's all about power

One of the secrets behind the superior hydraulic power of E12D and E14D, which allows an impressive digging efficiency, is their class-leading engine power. In order to optimize travel speed and increase traction when needed, E12D and E14D are equipped with two-speed travel motors with the auto-shift down function as standard.



More work, less maintenance

E12D and E14D feature a foldable seat that significantly simplifies access to all maintenance points.



Easy refueling

To facilitate easy daily usage of your machine, the fuel tank has been placed in a unique spot. This innovative location at the back of the machine makes refuelling easy and releases more space in the engine compartment.

The perfect balance between agility and performance.

Thanks to their variable undercarriage, E17D, E18D, E19D, E20D and E22D can pass through spaces as narrow as just 99 centimetres, without compromising stability once the undercarriage is fully extended before starting work.



Overall machine width (mm)	E17D	E18D / E19D / E20D / E22D
Retracted undercarriage	990	990
Extended undercarriage	1250	1300



Easy to transport

We know that a machine is profitable when you spend as much time as possible working with it. To transport New Holland mini excavators quickly from one jobsite to another, the self-supporting canopy allows you to quickly and safely load the machine onto a truck or trailer. Convenient tie-down points and mechanical locking of the slewing enable the machine to be secured for transport in just a few minutes.



Cab or canopy: your choice

The five models in the New Holland compact excavator range are available either with canopy or cab. On E17D, E18D and E19D, the cab does not compromise the zero tail swing design. On the other hand, if cab roominess is your priority, E22D is the right model for you. This short radius model features an XXL cab, yet retains the variable undercarriage. All D-series models in this weight class stand out thanks to stylish and convenient operator stations with nice multicolour clusters, a smart front window opening system and plenty of storage space including a practical cell-phone carrier.



Mulching kings

E19D, E20D and E22D can be equipped with the High Flow option, which provides a significant advantage for applications such as mulching with a flail head. Effective mulching requires a constant hydraulic flow to the tool, particularly when simultaneously travelling and moving the arm - and this is exactly what the High Flow option delivers.

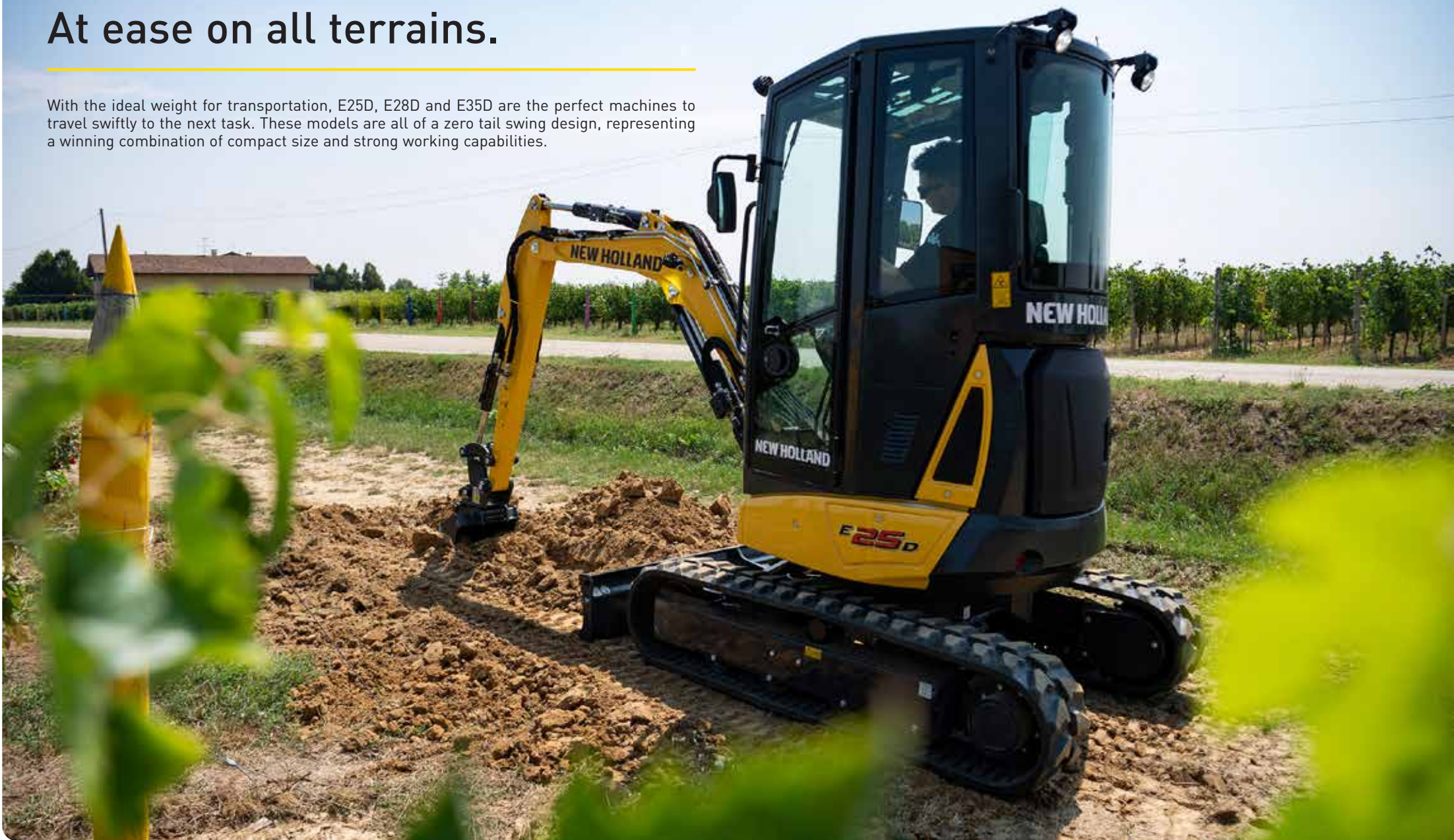


Maintenance made easy

Keeping maintenance easy is one of our missions! You will find easy access to all components thanks to the tiltable cab and canopy.

At ease on all terrains.

With the ideal weight for transportation, E25D, E28D and E35D are the perfect machines to travel swiftly to the next task. These models are all of a zero tail swing design, representing a winning combination of compact size and strong working capabilities.





To begin with... precision

These New Holland excavators feature an advanced load sensing hydraulic system with a flow sharing distributor. As a result, power is available on demand and simultaneous movements are optimized. Hydraulic attachments can easily be operated directly from the joysticks with the 1st and 2nd proportional auxiliary controls, and a 3rd auxiliary circuit is available on demand. The unique high-flow option is the right choice when mulching is the main application.



Tailor-made minis

The full potential of E25D, E28D and E35D can be exploited when they are equipped with a full array of attachments: not just digging or ditch cleaning buckets, but also earth augers, sorting grabs, wood grapples, mulchers, hammers and much more. And to easily change the different attachments, mechanical or hydraulic quick couplers are a real help.



360° visibility

D-series mini excavators have been designed to offer a high level of comfort. All-round visibility is afforded by a large glazed area, a panoramic sky window and a powerful LED lights package.



Comfort pays off

On E28D and E35D, comfort can be further enhanced by upgrading with an array of optional features, such as air conditioning, electric refuelling pump, pneumatic seat, DAB radio with Bluetooth and many others. Operators who feel comfortable while working are more productive and work in a safer way too.



Peace of mind

D-Series minis are extremely reliable machines, designed for a long life provided that regular maintenance is properly done. For this reason, service access is intuitive and convenient. The cab can be quickly tilted, providing excellent access to the heart of the machine. Refuelling is simpler on D-series mini excavators: the unique location of the fuel tank in the rear hood makes the process extremely easy and releases space in the engine compartment for even better maintenance accessibility.



A personalized machine

To customize your D-series mini excavator for different jobs where extra stability is key, additional counterweights can easily be bolted on the rear of the machine. And if it is to be used to lift heavy objects, a certified object handling kit, which includes safety check valves, lifting capacity diagrams and an acoustic overload alarm, is available as option.

Stylish and versatile.

The high-end of the D-series range includes two zero tail swing models, E50D and E60D, and two short radius models, E55D and E65D. These machines feature an electronically controlled engine combined with an efficient load-sensing hydraulic system. The array of performance and comfort features available is comprehensive, and includes automatic air conditioning, front and rear LED lights, pneumatic suspension seats, integrated rearview camera, electric fuel refill pump, dozer float function, 6x1 dozer blade and many more.





Extremely silent

Extremely silent and powerful Stage V engines allow for work in the most challenging conditions. Not only do these models excel in terms of engine power and torque, but they are also extremely silent thanks to the hydraulic fan-drive cooling system. The fan speed is electronically controlled, so that heat exchange is optimized while noise level is kept to a minimum, since fan rotation speed is adjusted depending on the real time cooling needs. The fan can even rotate in inverted direction, enabling to keep radiators clean at all times. An efficient cooling system contributes to keeping fluid properties within parameters, maximising machine component life.



Class-leading working range

E55D and E65D are equivalent to E50D and E60D respectively, but offer extra working range metrics thanks to the additional articulation on the boom. The two-piece boom design significantly improves the capacity of the machine to dig further, dump higher and even work closer to the machine itself. To maintain the optimum stability, two-piece boom models are equipped with an additional counterweight as standard, making E55D and E65D short radius rather than zero tail swing models.



Embedded innovation

The 7" multicolour display allows customization of several parameters, including flow rate settings for the auxiliary circuits, the fan drive automatic reversal interval, the auto-idle, sensitivity of the controls, the cab ventilation and many others. The display also acts as a self-diagnostic tool, reminding the operator when maintenance is due and keeping machine health parameters under control at all times. Technological innovation goes even further on E60D and E65D models: the advanced Electronic Open Circuit (EOC) hydraulic system is a type of artificial intelligence that controls oil flow, system pressure and power. The ultimate goals are to minimize the probability of machine downtime, to increase machine productivity and to maintain extremely low emissions.



Easy maintenance

As on all the smaller models of the D-series, E50D, E55D, E60D and E65D have been designed to allow quick maintenance tasks: the engine hood, the radiator cover, the rear cover, the distributor guard and the fuse compartment guard can all easily be removed or opened, granting perfect accessibility to all service components. What's more, the cab can easily be tilted forward, providing maximum accessibility to all machine components.

New E15X Electric Power.

Power on demand

New Holland electric models feature the most advanced technology on the market in terms of power demand management. E15X Electric Power uses no energy at all when on stand-by, since no oil circulates through the system until a joystick or lever is actioned. Depending on the selected work mode - Power, Standard or Eco - the machine can work for a full eight-hour working day assuming a one-hour fast charge during lunch break.



Silent operation

E15X is extremely quiet, not only because of its electric power pack and the smart power demand management, but also because of its helicoidal pump that significantly reduces noise coming from the hydraulic system while working.



			E15X Electric Power
Weight / Tail Swing Design			1.4t Short Radius
Overall width (Retracted / Extended undercarriage)			790 / 1.050mm
Overall machine height			2.300 / 1.370mm
Lithium ion battery			102 V / 21.5kWh
Average Autonomy			4 – 8 hours (Depending on Work Model)
Battery charging:	On-board (220V / 16A)		10h
	Off-board (380V / 28A)	0 - 80%	1.0h
		0 - 100%	1.5h
E25X: model under development. More details coming soon.			

Two alternatives to charge the battery

The 21.5 kW lithium-ion battery can be charged either with the standard on-board charger or with the optional off-board fast charger.



Higher class models performance

E15X maintains the same ultra-compact dimensions of E14D - overall width under the 80cm threshold and a foldable roll-bar that enables an overall height reduction to just 137cm - while delivering a higher performance than E14D, thanks to its precise load-sensing hydraulic system with flow-sharing distributor, which allows more efficient simultaneous movements.



100% customizable

Through the instrument cluster it is possible to personalize each single movement of the machine independently. This pushes machine versatility to a higher level, since the operator can adapt the machine behavior with an unprecedented level of accuracy.



Fully green

New Holland electric minis are capable of getting the job done in perfect harmony with the environment. On top of the fully electric power source, E15X uses bio-hydraulic oil as standard and the batteries are cobalt-free types, which means eco-friendliness, reliability and safety. This model is eligible for green incentives, and thanks to the fewer parts compared to traditional diesel machines, maintenance and repair costs are reduced significantly.

Attachments for dedicated efficiency.

A mini-excavator is far more versatile than you think. With the right attachment, these machines can be used for a wide and diverse range of duties to include fence and temporary crop support erection through to hedge and verge cutting. With New Holland models you have the added advantage of high constant hydraulic flow. Powering demanding attachments is a key New Holland advantage.

The range of attachments purpose developed for mini-excavators continues to increase, further increasing future versatility.

Attachments available

- Standard or Ditching Bucket
- Mulchers
- Hydraulic Hammer
- Wood Grapple
- Mechanical & Hydraulic coupler
- Sorting Grapples
- Augers



Hydraulic Quick Coupler

- Hands-free coupling and release of buckets
- Safe swap between large, heavy attachments
- Mechanical quick lock attachment brackets are also available



Standard or ditching bucket

Standard excavator or specialist ditching buckets can be fitted quickly and easily.



Auger

Built with high endurance steel and equipped with a high-performance hydraulic motor, it guarantees long term reliability.



Hammer

The high quality steels and efficient heating treatments used, provide long-lasting performance and reduced maintenance.



Mulcher

Versatile mulcher ideal for general maintenance and verge mowing.



Wood Grapple

Ideal for handling logs and long pieces of wood, wood grapples are equipped with 360° rotator. Self-lubricating bushings and a shock valve.

Satisfaction guaranteed.

Buying a New Holland machine is just the beginning of a partnership. A vast wealth of local and regional knowledge means you can rely on a partner who can offer you ultimate peace of mind. Accompanying you every step of the way by a highly trained and skilled team of professionals, who are dedicated to offering you just what you need to grow your business. In the dealership, 24 hours a day, 365 days a year, New Holland people are always willing to go the extra mile to guarantee you complete satisfaction.



CNH Industrial Aftermarket solutions

All New Holland official dealers stock a full range of parts for rapid delivery and reduced downtime. Approved accessories are also available to optimise your machines' performance in all conditions.



CNH Industrial Capital

CNH Industrial Capital, the financial services company of New Holland, is well established and respected within the agricultural sector. Advice and tailored finance packages are available to meet your specific needs. CNH Industrial Capital offers you the peace of mind that comes from dealing with a specialist in agricultural financing.



New Holland Top Service

For ultimate peace of mind, Top Service offers you around the clock assistance. No matter when, no matter where, simply call the toll free numbers for assistance, enjoy express parts delivery with a 100% total satisfaction guarantee.

MODELS	E15X	
Engine		
Type	Internal Permanent Magnets (IPM)	
Rated engine power	(kW)	11.0/15.0
Peak engine power	(kW)	16.0
Supply	three-phase alternating current	
Supply		
Battery chemistry	lithium-ion	
Gross capacity	(kWh)	21.5
Nominal voltage of the system	(V)	102
Autonomy according to the operating mode	(h)	4 ÷ 8
Charging times		
On-board charger 220V	(h)	10
External three-phase rapid charge 380V (Optional)	(h)	1.0 (80%) - 1.5 (100%)
Slewing & travel speed		
Travelling speed (AUTO TWO SPEED)	(km/h)	1st : 0 ÷ 1.8 / 2nd : 0 ÷ 3.8
Slew speed	(rpm)	9.5
Operating modes	ECO / STD / PWR	
Max. (rpm)	2400 / 2600 / 2800	
Hydraulic system		
Control valve	Load Sensing Flow Sharing	
Hydraulic system capacity	(l)	15
Pump type	1 low-noise helical gear pump	
Pump displacement	(cm ³)	10.1
Pump flow rate	(l/min)	28
Max. circuit calibration pressure	(bar)	180
Auxiliary system (max pressure):		
AUX 1 single or double effect	(l/min)	28 - 180
AUX 2 - optional	(l/min)	10 - 180
Controls		
Boom, dipper stick, bucket and turret swing	2 electro-proportional joysticks	
Track movements (included counter rotation)	2 electro-proportional levers	
Dozer blade	electro-proportional lever	
Auxiliary system AUX 1 (single or double effect)	electroproportional switch on right joystick	
Boom swing	electroproportional switch on left joystick	
Weights		
Transport weight with roll-bar	(kg)	1315
Operating weight with roll-bar and FOPS 1 roof ISO 6016	(kg)	1420

MODELS	E12D	E14D	E17D	E18D	E19D	E20D	
Engine							
Type	Kubota D722 - Stage V	Kubota D722 - Stage V	Yanmar 3TNV70 - Stage V	Yanmar 3TNV70 - Stage V	Yanmar 3TNV76 - Stage V	Yanmar 3TNV76 - Stage V	
Max. Power (2200rpm)	(kW/hp)	8.8/11.8	8.8/11.8	12/16.3	12/16.3	13.7 - 18.6	13.7 - 18.6
Displacement	(cm ³)	719	719	854	854	1116	1116
Number of cylinders	(n°)	3	3	3	3	3	3
Cooling		Liquid	Liquid	Liquid	Liquid	Liquid	Liquid
Consumption	(l/h)	1.8	1.8	2.4	2.4	3.1	3.1
Alternator	V (Ah)	12 (40)	12 (40)	12 (40)	12 (40)	12 (40)	12 (40)
Battery	V (Ah)	12 (45)	12 (45)	12 (65)	12 (65)	12 (65)	12 (65)
Hydraulic system							
Pump type		n° 2 gear pumps	variable flow	variable flow	variable flow	variable flow	variable flow
Pump displacement	(cm ³)	5.5 + 5.5	5.5 + 5.5	8 + 8 + 6.6	8 + 8 + 6.6	9 + 9 + 6.6	9 + 9 + 6.6
Pump capacity	(l/min)	26	28	16 + 16 + 13.1	16 + 16 + 13.1	18 + 18 + 13.1	18 + 18 + 13.1
Max. circuit calibration pressure	(bar)	165	200	220	220	240	240
Auxiliary system (max pressure):							
AUX 1 - single or double effect	(l/min / bar)	26 / 165	28 / 200	29.1 / 205	29.1 / 205	31.1 / 205	31.1 / 205
AUX 2 - optional	(l/min / bar)	12 / 165	13 / 165	13.1 / 205	13.1 / 205	13.1 / 205	13.1 / 205
AUX 3 - optional	(l/min / bar)	-	-	16 / 220	16 / 220	18 / 240	18 / 240
Slewing & travel speed							
Travelling speed (AUTO TWO SPEED)	(km/h)	1st : 0 ÷ 1.8 / 2nd : 0 ÷ 3.8	1st : 0 ÷ 1.8 / 2nd : 0 ÷ 3.8	1st : 0 ÷ 2.2 / 2nd : 0 ÷ 4.1	1st : 0 ÷ 2.2 / 2nd : 0 ÷ 4.1	1st : 0 ÷ 2.3 / 2nd : 0 ÷ 4.4	1st : 0 ÷ 2.3 / 2nd : 0 ÷ 4.4
Slew speed	(rpm)	9.5	9.5	10.5	10.5	10.5	10.5
Controls							
Boom, dipper stick, bucket and turret swing		2 pilot joysticks	2 pilot joysticks	2 pilot joysticks	2 pilot joysticks	2 pilot joysticks	2 pilot joysticks
Positioner two pieces boom		-	-	-	-	-	electroproportional switch on right joystick
Track movements (included counter rotation)		2 pilot levers	2 pilot levers	2 mechanical levers	2 mechanical levers	2 pilot levers	2 pilot levers
Dozer blade		pilot lever	pilot lever	pilot lever	pilot lever	pilot lever	pilot lever
Auxiliary system with latch AUX 1 (single or double effect)		electroproportional switch on right joystick		right pedal	right pedal	electroproportional switch on right joystick	
Boom swing		electroproportional switch on left joystick		left pedal	left pedal	electroproportional switch on left joystick	
Weights							
Transport weight with roll-bar*	(kg)	1200	1255	-	-	-	-
Transport weight with roll-bar and FOPS 1 roof*	(kg)	1225	1280	-	-	-	-
Operating weight with roll-bar* ISO 6016	(kg)	1305	1360	-	-	-	-
Operating weight with roll-bar and FOPS 1 roof* ISO 6016	(kg)	1330	1385	-	-	-	-
Transport weight with canopy*	(kg)	-	-	1580	1720	1770	1900
Transport weight with cab*	(kg)	-	-	1690	1830	1880	2010
Operating weight with canopy* ISO 6016	(kg)	-	-	1690	1830	1880	2010
Operating weight with cab* ISO 6016	(kg)	-	-	1800	1940	1990	2120
* with rubber tracks							
Circuit and component capacities							
Fuel tank	(l)	14.5	14.5	25	25	25	25
Hydraulic oil tank	(l)	9.5	9.5	20	20	20	20
Hydraulic circuit capacity	(l)	15	15	29	29	29	30
Cooling system capacity	(l)	6	6	4.5	4.5	4.5	4.5
Engine oil	(l)	1.8	1.8	2.4	2.4	2.8	2.8

MODELS		E22D	E25D	E28D	E35D	E50D	E55D	E60D	E65D
Engine									
Type		Kubota D1105 - Stage V	Yanmar 3TNV76 - Stage V	Kubota D1703-M-DI-E4B - Stage V	Kubota D1703-M-DI-E4B - Stage V	Kubota V2403-CR-T - Stage V	Kubota V2403-CR-T - Stage V	Kubota V2607-CR-T - Stage V	Kubota V2607-CR-T - Stage V
Max. Power (2200rpm)	[kW/hp]	15.4 - 20.9	13.7 - 18.6	18.2 - 24.7	18.2 - 24.7	42.6 - 57.9	42.6 - 57.9	44.3 - 60.2	44.3/60.2
Displacement	[cm ³]	1105	1116	1647	1647	2434	2434	2615	2615
Number of cylinders	[n°]	3	3	3	3	4	4	4	4
Cooling		Liquid	Liquid	Liquid	Liquid	Liquid	Liquid	Liquid	Liquid
Consumption	[l/h]	3	3	3.5	3.5	6.9	6.9	7.6	7.6
Alternator	V [Ah]	12 (40)	12 (40)	12 (40)	12 (40)	12 (60)	12 (60)	12 (60)	12 (60)
Battery	V [Ah]	12 (62)	12 (65)	12 (74)	12 (74)	12 (95)	12 (95)	12 (95)	12 (95)
Hydraulic system									
Circuit Type		Load Sensing closed center system with "Flow Sharing" control valve							
Pump type		1 LS variable pump + 1 gear pump	1 LS variable pump	1 LS variable pump + 1 gear pump		1 LS hydraulic variable pump with electronic control + 1 gear pump			
Pump displacement	[cm ³]	25 + 4.95	25	48 + 5	48 + 5	65 + 14.5	65 + 14.5	71 + 14	71 + 14
Pump capacity	[l/min]	52 + 10.3	52	105 + 10	105 + 10	129 + 28.8	129 + 28.8	141 + 27.8	141 + 27.8
Max. circuit calibration pressure	[bar]	240	240	250	250	280	280	280	280
Auxiliary system (max pressure):									
AUX 1 - single or double effect with priority	[l/min / bar]	50 / 200	45 / 210	50 / 200	50 / 200	70 / 200	0 - 200	85 - 200	85 / 200
AUX 2 - optional	[l/min / bar]	13.8 / 220	18 / 200	35 / 20-250	35 / 20-250	-	-	-	-
AUX 2 - double effect - optional	[l/min / bar]	-	-	-	-	40/30 / 280	40/30 - 280	60/40 - 280	-
AUX 2 - double effect	[l/min / bar]	-	-	-	-	-	-	-	60/40 / 280
AUX 3 - optional	[l/min / bar]	50 / 220	46 / 210	35 / 20-250	35 / 20-250	40/30 / 280	40/30 - 280	37/37 - 280	-
AUX 3 - double effect - optional	[l/min / bar]	-	-	-	-	-	-	-	37/37 / 280
Slewing & travel speed									
Travelling speed (AUTO TWO SPEED)	[km/h]	1st : 0 ÷ 2.6 / 2nd : 0 ÷ 4.0	1st : 0 ÷ 2.6 / 2nd : 0 ÷ 4.3	1st : 0 ÷ 2.5 / 2nd : 0 ÷ 4.6	1st : 0 ÷ 2.5 / 2nd : 0 ÷ 4.6	1st : 0 ÷ 2.6 / 2nd : 0 ÷ 4.5	1st : 0 ÷ 2.6 / 2nd : 0 ÷ 4.5	1st : 0 ÷ 2.3 / 2nd : 0 ÷ 4.5	1st : 0 ÷ 2.3 / 2nd : 0 ÷ 4.5
Slew speed	[rpm]	10.5	11	10	11	10.5	10.5	11	11
Controls									
Boom, dipper stick, bucket and turret swing		2 pilot joysticks	2 pilot joysticks	2 pilot joysticks	2 pilot joysticks	2 pilot joysticks	2 pilot joysticks	2 pilot joysticks	2 pilot joysticks
Track movements (included counter rotation)		2 pilot levers	2 pilot levers	2 pilot levers	2 pilot levers	2 pilot levers	2 pilot levers	2 pilot levers	2 pilot levers
Dozer blade		pilot lever	pilot lever	pilot lever	pilot lever	pilot lever	pilot lever	pilot lever	pilot lever
Priority auxiliary system with holding function									
AUX 1 (single or double effect)		electroproportional switch on right joystick		electroproportional switch on left joystick		electroproportional switch on right joystick			
Auxiliary system AUX 2 (double effect)		-	-	electroproportional switch on left joystick			electroproportional switch on right joystick		
Auxiliary system AUX 3 (double effect)		-	-	-	-	electroproportional switch on left joystick			
Boom swing						electroproportional switch on left joystick			
Weights									
Operating weight with canopy* ISO 6016	[kg]	2220	2580	3020	3270	-	-	-	-
Operating weight with cabin* ISO 6016	[kg]	2320	2710	3150	3400	4950	5400	5970	6520
Transport Weight with canopy	[kg]	2090	2450	2890	3120	-	-	-	-
Transport Weight with cab	[kg]	2190	2580	3020	3250	4800	5250	5740	6290
* with rubber tracks									
Circuit and component capacities									
Fuel tank	[l]	20	26	46	45	75	75	85	85
Hydraulic oil tank	[l]	16	29	30	30	65	65	60	60
Hydraulic circuit capacity	[l]	25	40	54	54	85	85	80	80
Cooling system capacity	[l]	4	5	7.5	7.5	11	11	12	12
Engine oil	[l]	4.4	2.8	7	7	9.5	9.5	10.2	10.2

MODELS		E25D	E25D	E28D	E28D	E35D	E35D
Performance data		Arm Std.	Arm Opt.	Arm Std.	Arm Opt.	Arm Std.	Arm Opt.
Arm length	(mm)	1350	1550	1200	1400	1200	1400
Max. digging depth	(mm)	2700	2900	2650	2850	2870	3070
Max. dumping height	(mm)	3330 (3190)	3460 (3310)	3100	3220	3110	3230
Bucket breaking force	(daN)	2200	2200	3500	3500	3100	3100
Arm breaking force ISO 6015	(daN)	1450	1450	1750	1750	1750	1750
Traction force	(daN)	2200	2200	3400	3400	3400	3400
Ground bearing pressure with canopy (ABS roof)	(kg/cm ²)	-	-	-	-	-	-
Ground bearing pressure with rubber tracks and canopy (with cabin)	(kg/cm ²)	0.28 (0.29)	0.28 (0.29)	0.29 (0.31)	0.29 (0.31)	0.33 (0.34)	0.33 (0.34)
Max. slope		60% - 30°	60% - 30°	60% - 30°	60% - 30°	60% - 30°	60% - 30°

MODELS		E50D	E50D	E55D	E55D	E60D	E60D	E65D	E65D
Performance data		Arm Std.	Arm Opt.	Arm Std.	Arm Opt.	Arm Std.	Arm Opt.	Arm Std.	Arm Opt.
Arm length	(mm)	1500	1750	1500	1750	1650	1900	1650	1900
Max. digging depth	(mm)	3330	3580	3490	3740	3850	4100	3950	4200
Max. dumping height	(mm)	3920	4080	5030	5270	4090	4240	5280	5510
Bucket breaking force	(daN)	4300	4300	4300	4300	5300	5300	5300	5300
Arm breaking force ISO 6015	(daN)	2350	2350	2350	2350	3300	3300	3300	3300
Traction force	(daN)	5420	5420	5420	5420	6500	6500	6500	6500
Ground bearing pressure with canopy (ABS roof)	(kg/cm ²)	-	-	-	-	-	-	-	-
Ground bearing pressure with rubber tracks and canopy (with cabin)	(kg/cm ²)	0.28	0.28	0.31	0.31	0.31	0.31	0.34	0.34
Max. slope		60% - 30°	60% - 30°	60% - 30°	60% - 30°	60% - 30°	60% - 30°	60% - 30°	60% - 30°

MODELS		E25D	E28D	E35D	E50D	E55D	E60D	E65D
General dimensions								
Maximum width	(mm)	1500	1550	1580	1900	1900	1980	1980
Total height	(mm)	2527	2530	2530	2570	2570	2550	2550
Tracks width	(mm)	280	280	300	400	400	400	400
Rear rotation radius	(mm)	750	770	790	950	1050	1000	1100
Digging arm length standard (optional)	(mm)	1350 (1550)	1200 (1400)	1200 (1400)	1500 (1750)	1500 (1750)	1650 (1900)	1650 (1900)
Rollers number (for each side)	(n°)	4/1	4/1	4/1	5/1	5/1	5/1	5/1

AT YOUR OWN DEALER



www.newholland.com/uk - www.newholland.com/ie

